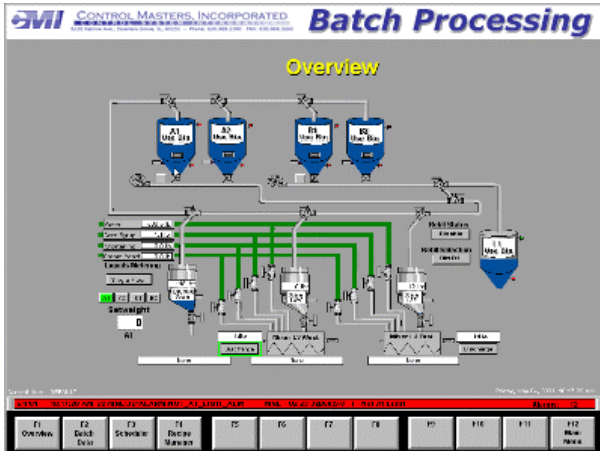


Batch Processing For The Food Industry



Technologies

PLC Logic Based Batch Control
Recipe Management via Access & SQL
SCADA / HMI Conversion & Integration

Services Provided

PLC Integration
SCADA / HMI Conversion & Integration
Database Design
Electrical Engineering

Project Description

This project is a conversion of an existing Wonderware application to RSVIEW32 Ver. 6.3. In addition to the conversion, other changes and improvements to the original application were made based upon customer requests.

The process itself consists of two mixers with four different liquid ingredients and four different types of flour being fed into them. The amount of each ingredient being batched is determined by a recipe, which is stored in a database.

The initial conversion of the application was done using Rockwell's application conversion service on their website. This took care of converting all the screens. The actual recipe handling was done with Visual Basic code and SQL commands writing to an Access database. The application allowed not only for recipe information to be read from the database but also for recipes to be added, deleted and manipulated in the database from operator accessible screens.

The successful conversion allowed for not only a seamless transition from one type of HMI system to another but also easier control for the operators and increased security and control over who could access the recipes.